

Step 1:

First you have to take off the screen from the ceiling/wall. Please lay the screen on the floor or table. The floor or table must be clean in order not to damage the material. Regulation's holes in casing must be placed toward the upper side.

Step 2:

Unscrew screws on the motor side of the screen and carefully take the lateral casing with engine.

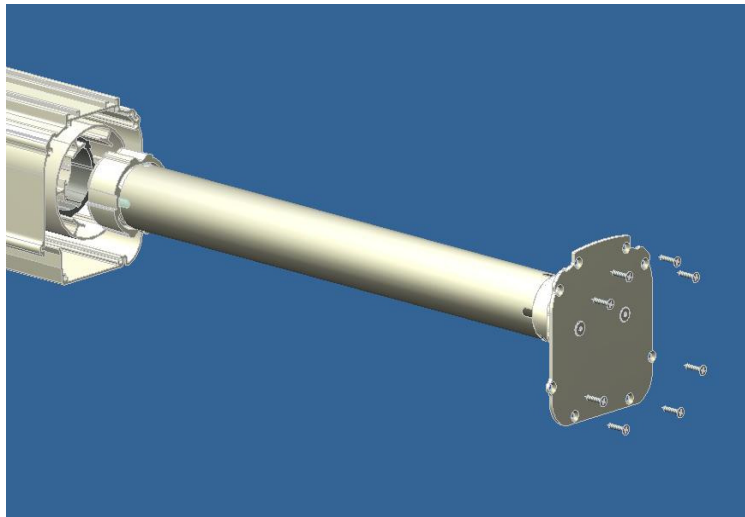


fig.1. Lateral casing with screws in Professional Adeo Screen.

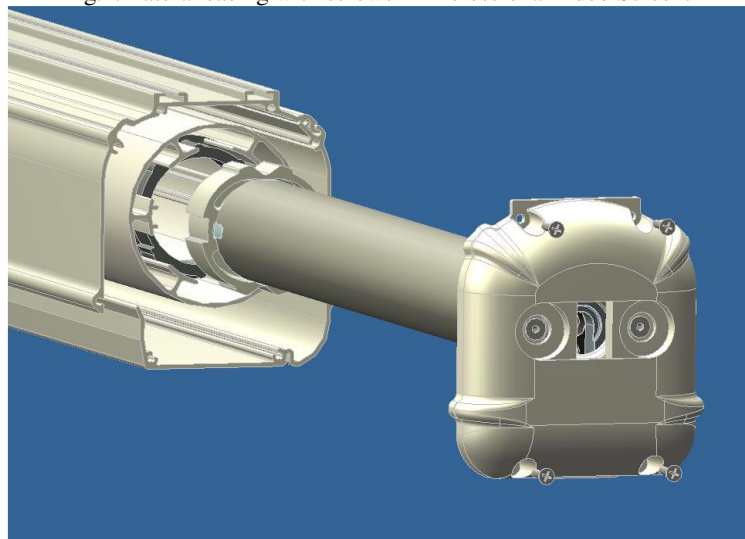


fig.2. Lateral casing with screws in Elegance Adeo Screen.

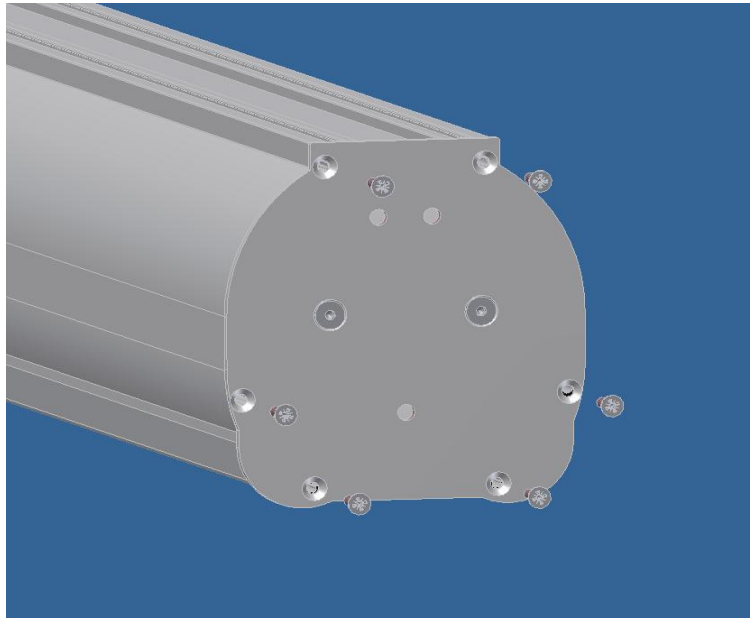


fig.3. Lateral casing with screws in Wide Adeo Screen.

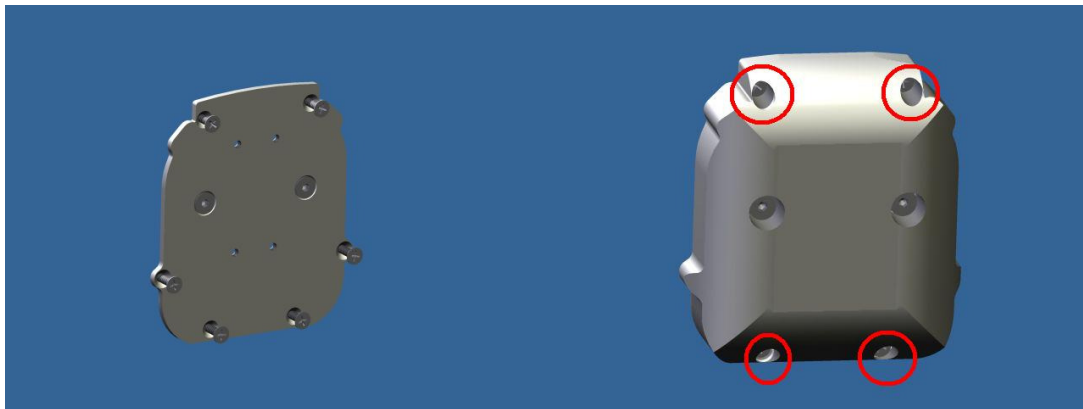


fig.3.a. Lateral casing with screws in small Professional and Elegance Adeo Screen.

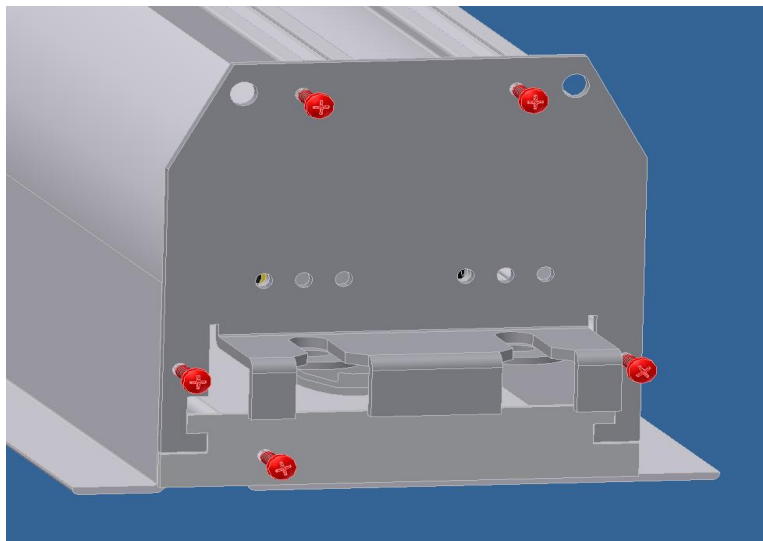


fig. 3. b. Lateral casing with screws in Inceel Adeo Screen.

Step 3:

Loosen a bit two screws on front of the end caps. Using screwdriver push inside plastic clips and remove end caps with iron adapter.

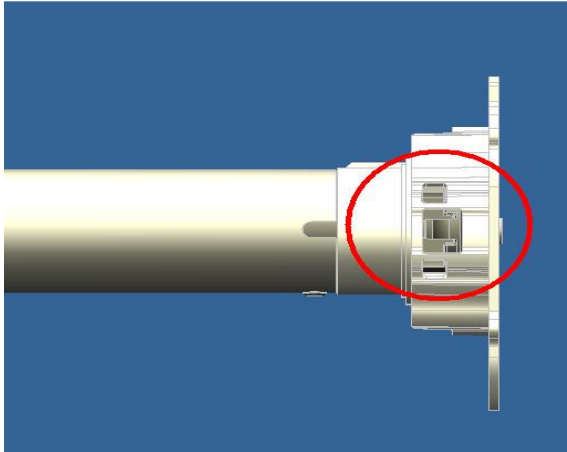


fig.4a. Position of plastic clips in iron adapter.

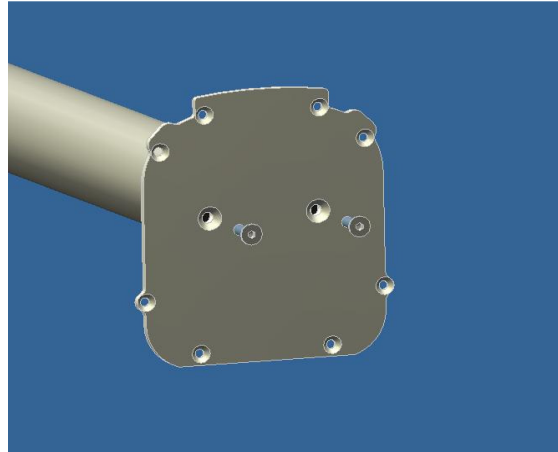


fig.4b. Screws from engine in Professional Screen.

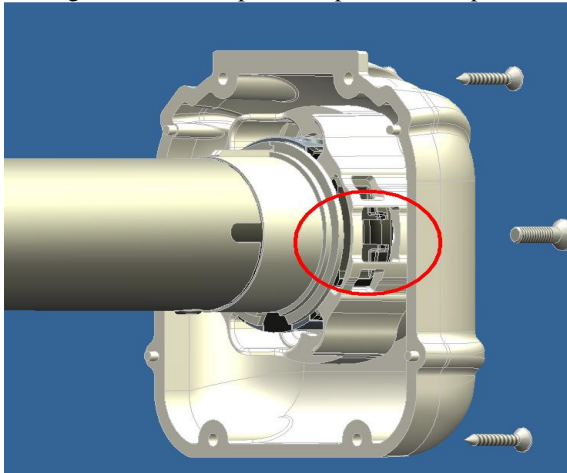


fig. 5a. Position of plastic clips in iron adapter.

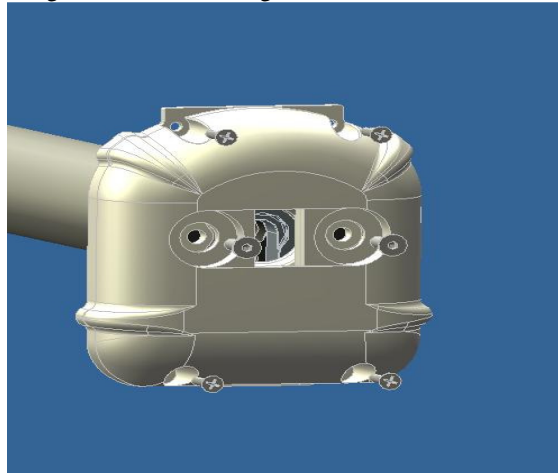


fig.5b. Screws from engine in Elegance Screen.

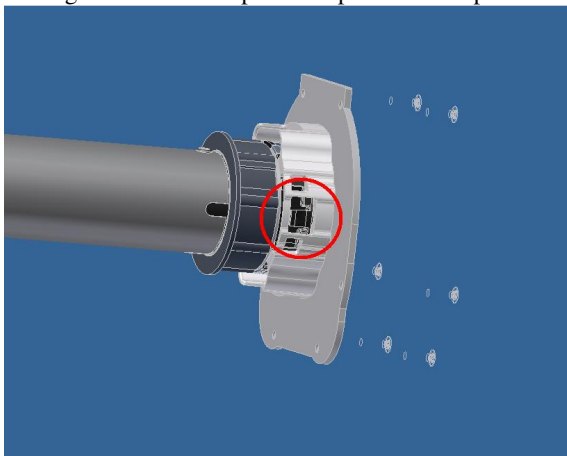


fig. 6a. Position of plastic clips in iron adapter.

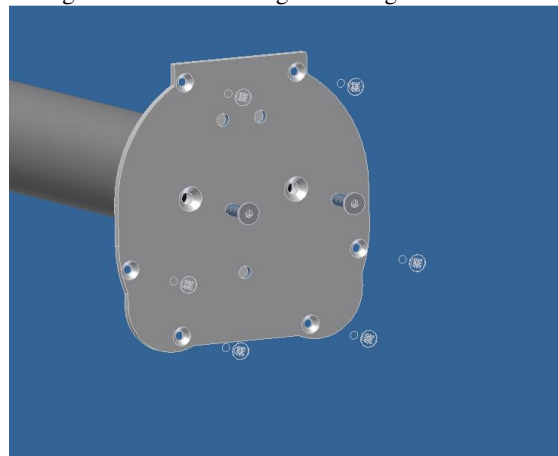


fig.6b. Screws from engine in Wide Screen.

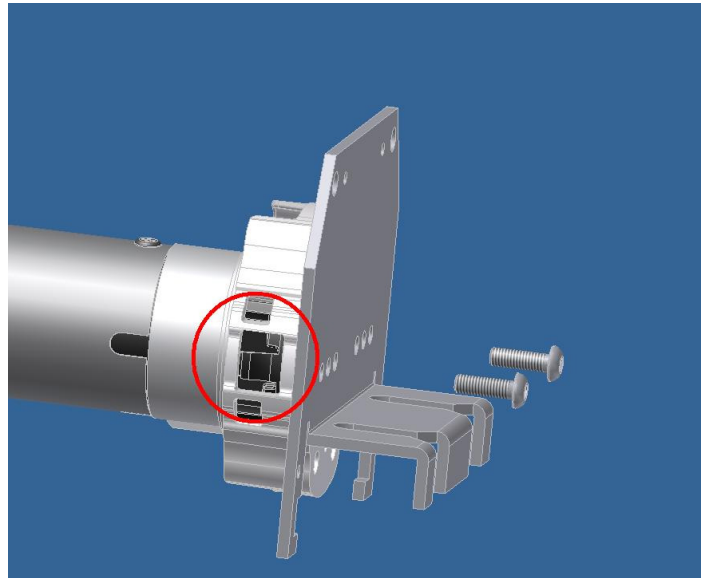


fig. 6.c. Position of plastic clips in iron adapter and screws from engine in Inceel Screen.

Step 4:

Prepare Somfy engine to installation. First install on the new motor all rubber collars. The correct position of rubber collar on the motor as shown below.

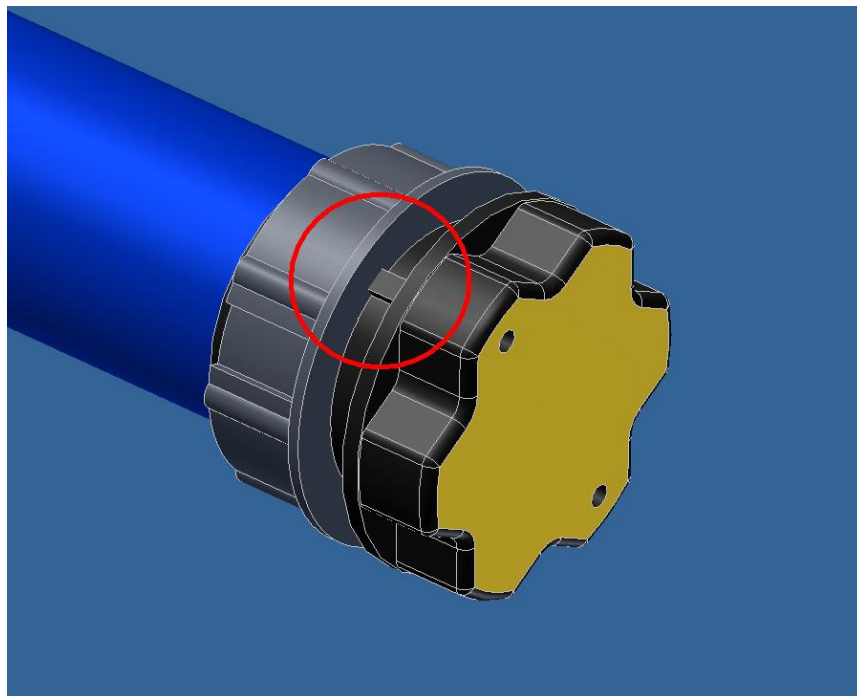


fig. 7. Position of rubber collar on motor Somfy.

Install the upper rubber collar on part of the new motor Somfy. Then install plastic secure caps in head of the motor.

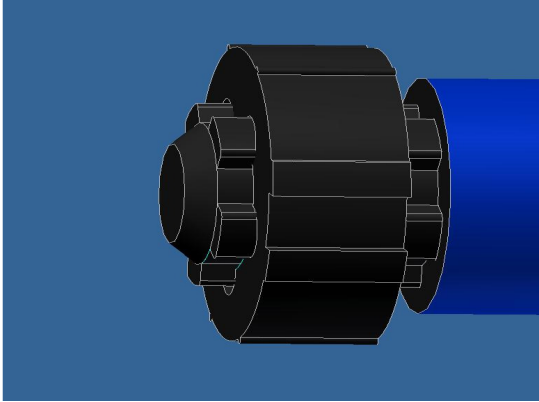


fig. 8a. Position of rubber collar on motor Somfy.

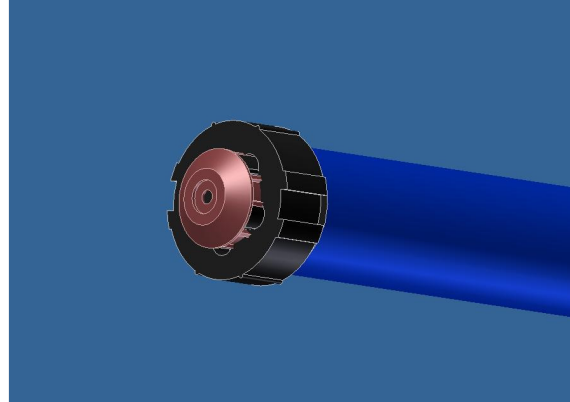


fig. 8b. Position of plastic secure caps in head of the motor.

Step 5:

Install the new motor Somfy inside the rolling tube like shown on the picture. It's very important to keep the right position of both rubber collars as shown on the picture below.

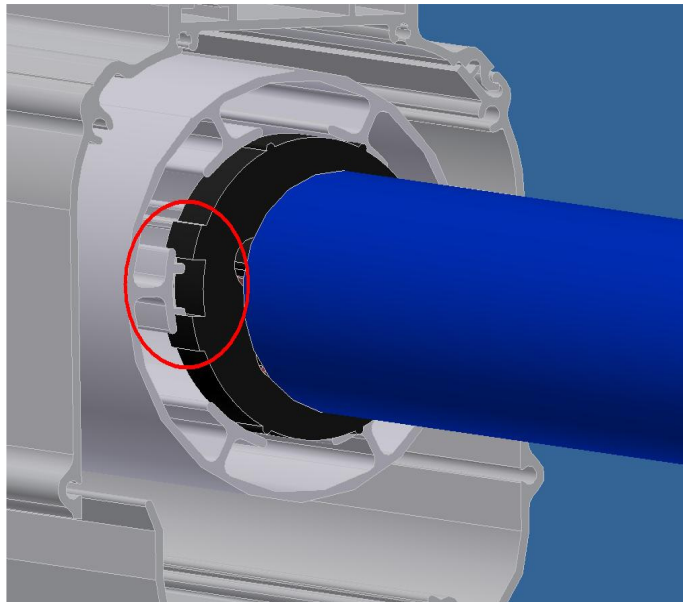


Fig. 9a. Right position of rubber collars.

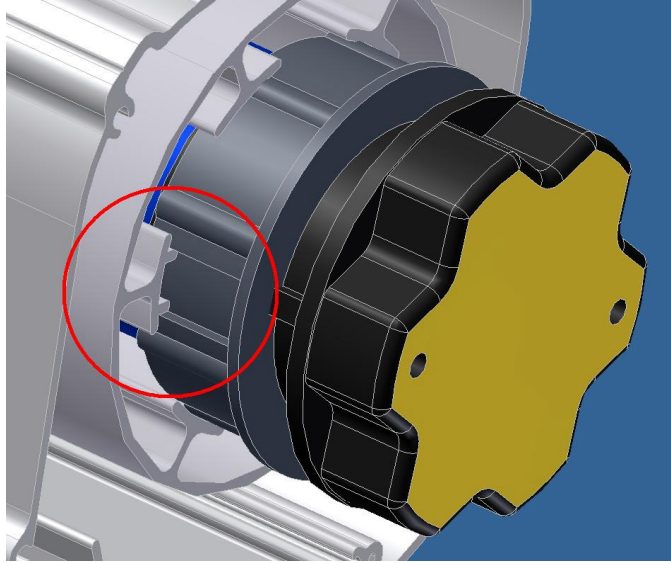


Fig. 9b. Right position of rubber collars

CAUTION!!

Set holes of limit switch underneath the casing.

Mount lateral casing with motor with new screws.

**MOUNT LATERAL CASING
AND SCREWS IN REVERS ORDER.**