

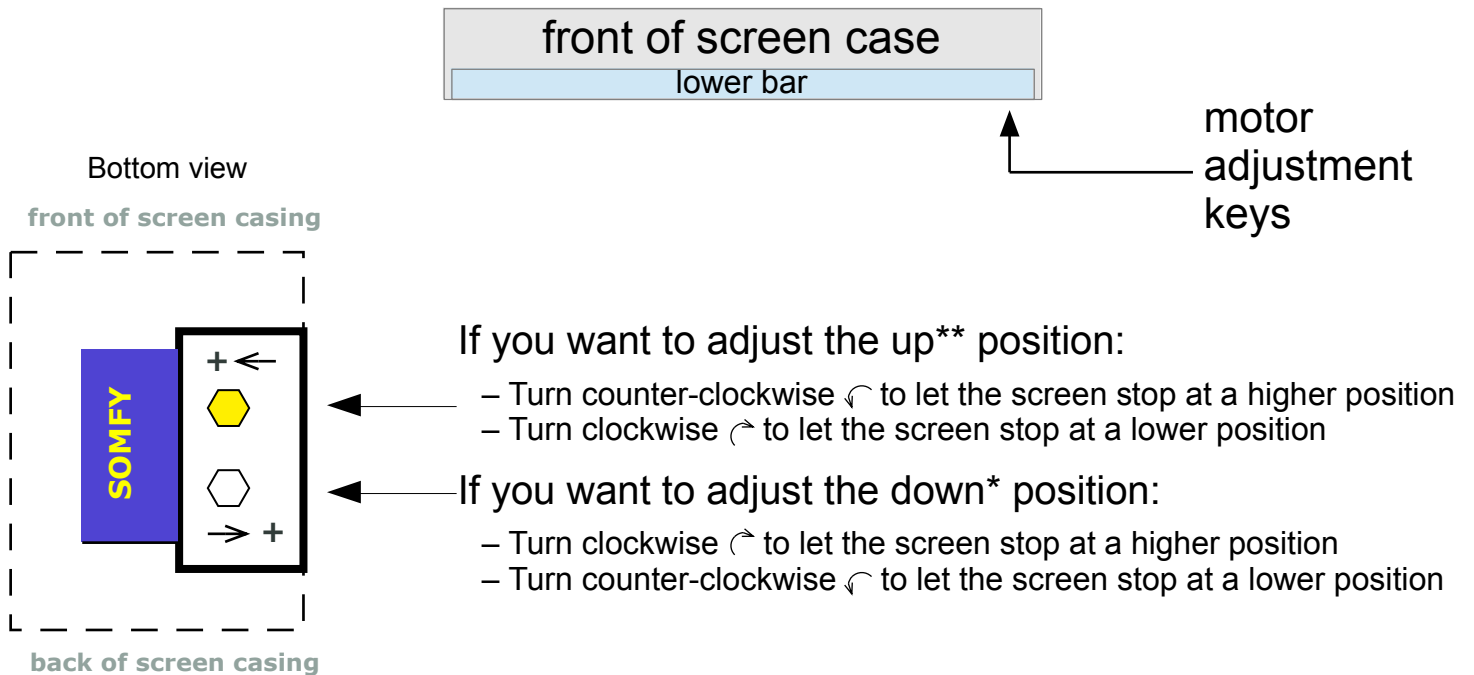


# How to adjust your Beamax screen to stop at the right position

\*NEVER LOWER THE SCREEN MORE THAN INITIALLY SET BY THE FACTORY

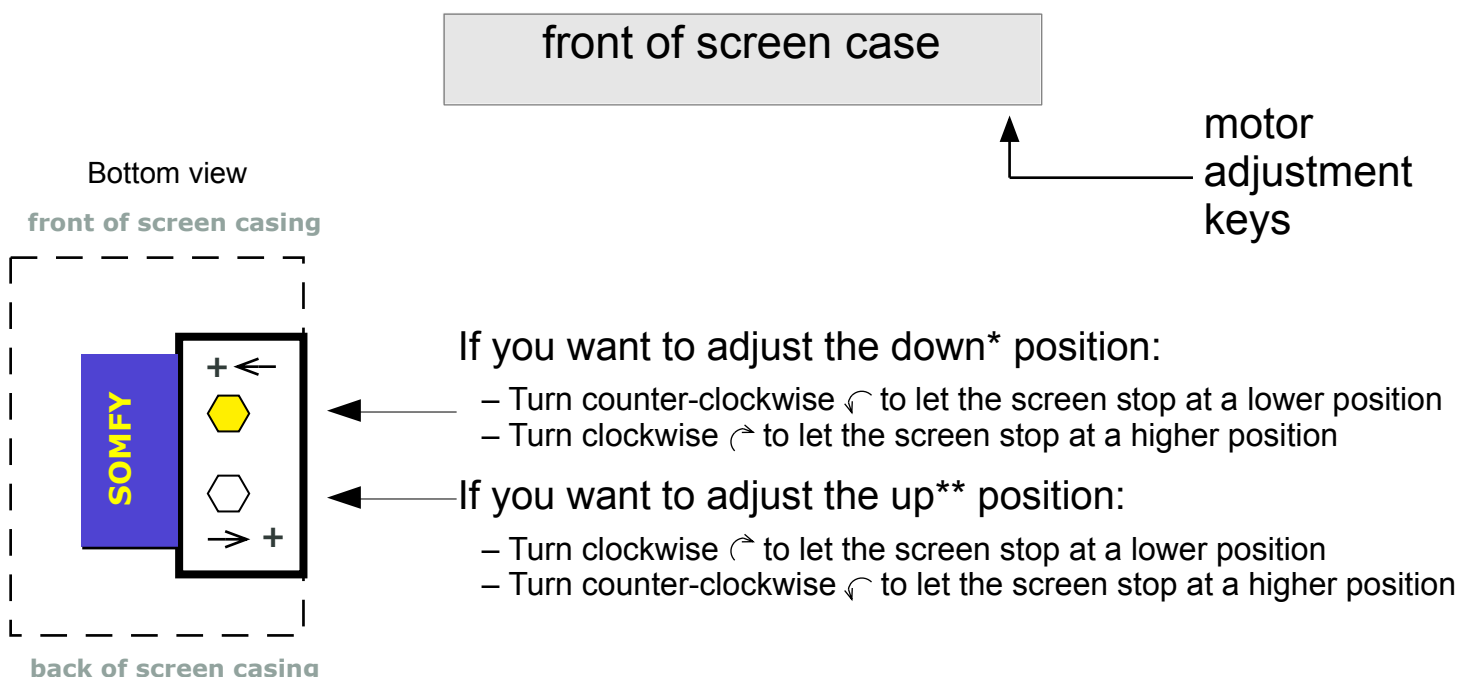
\*\*UPPER END STOP MUST ALWAYS BE ADJUSTED AT 2 MM FROM THE CASE

- Somfy motor on the **right** hand side
- Projection screen fabric falls from the **front**



!! you will only see the adjustment when you command the screen to go up or down !!

- Somfy motor on the **right** hand side
- Projection screen fabric falls from the **back**



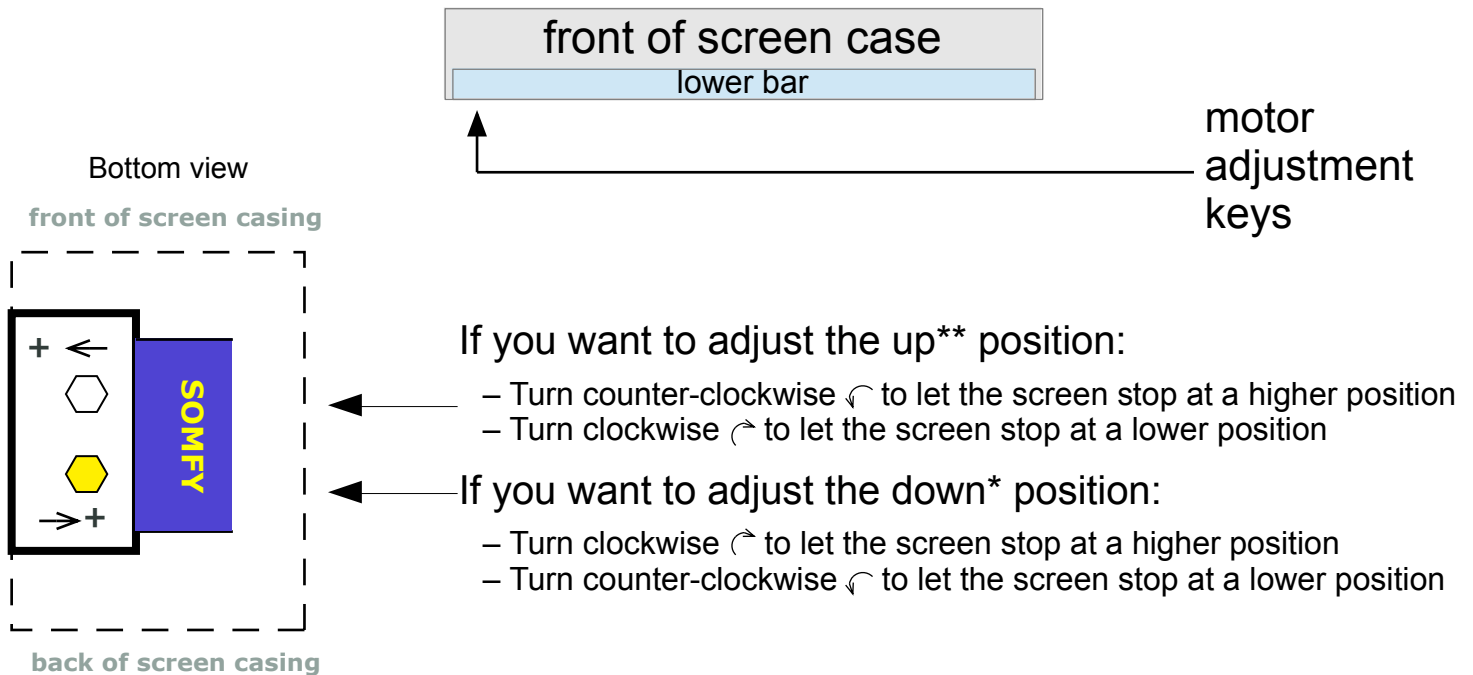
!! you will only see the adjustment when you command the screen to go up or down !!

# How to adjust your Beamax screen to stop at the right position

\*NEVER LOWER THE SCREEN MORE THAN INITIALLY SET BY THE FACTORY

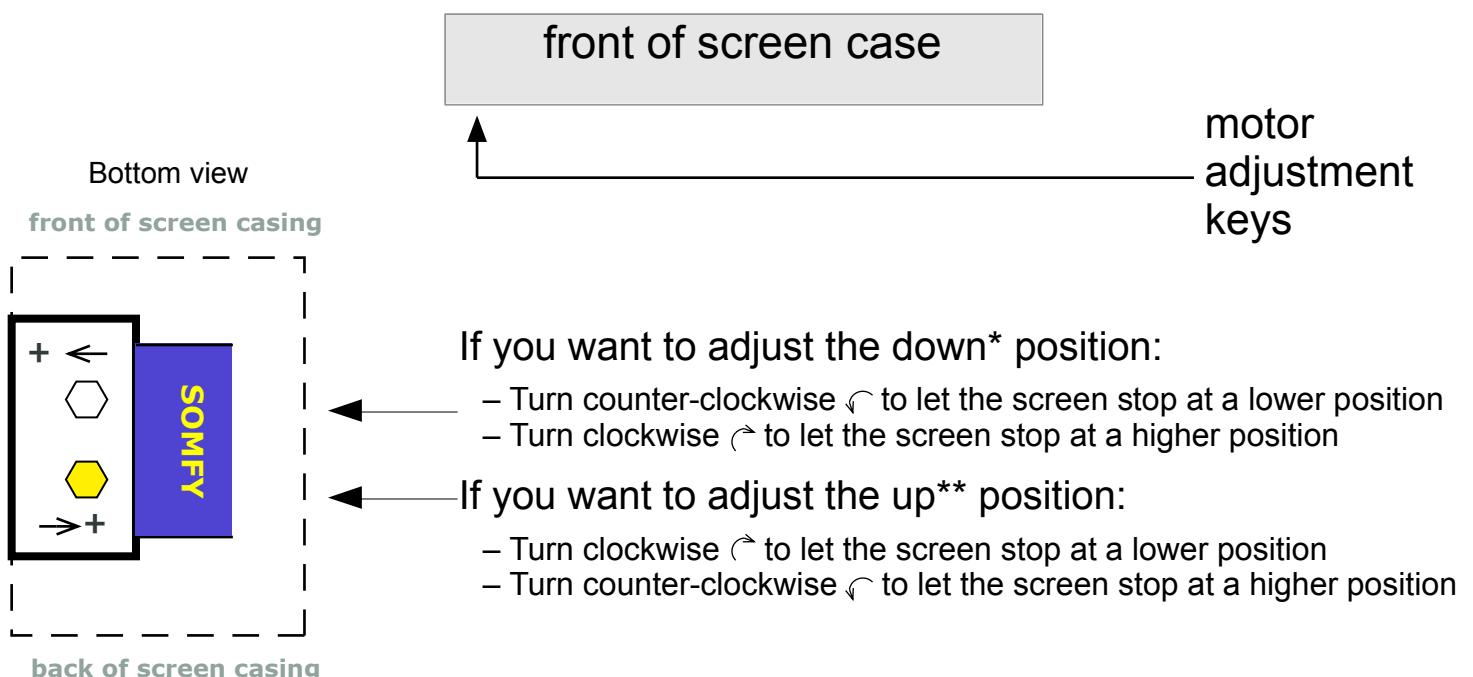
\*\*UPPER END STOP MUST ALWAYS BE ADJUSTED AT 2 MM FROM THE CASE

- Somfy motor on the **left** hand side
- Projection screen fabric falls from the **front**



!! you will only see the adjustment when you command the screen to go up or down !!

- Somfy motor on the **left** hand side
- Projection screen fabric falls from the **back**



!! you will only see the adjustment when you command the screen to go up or down !!